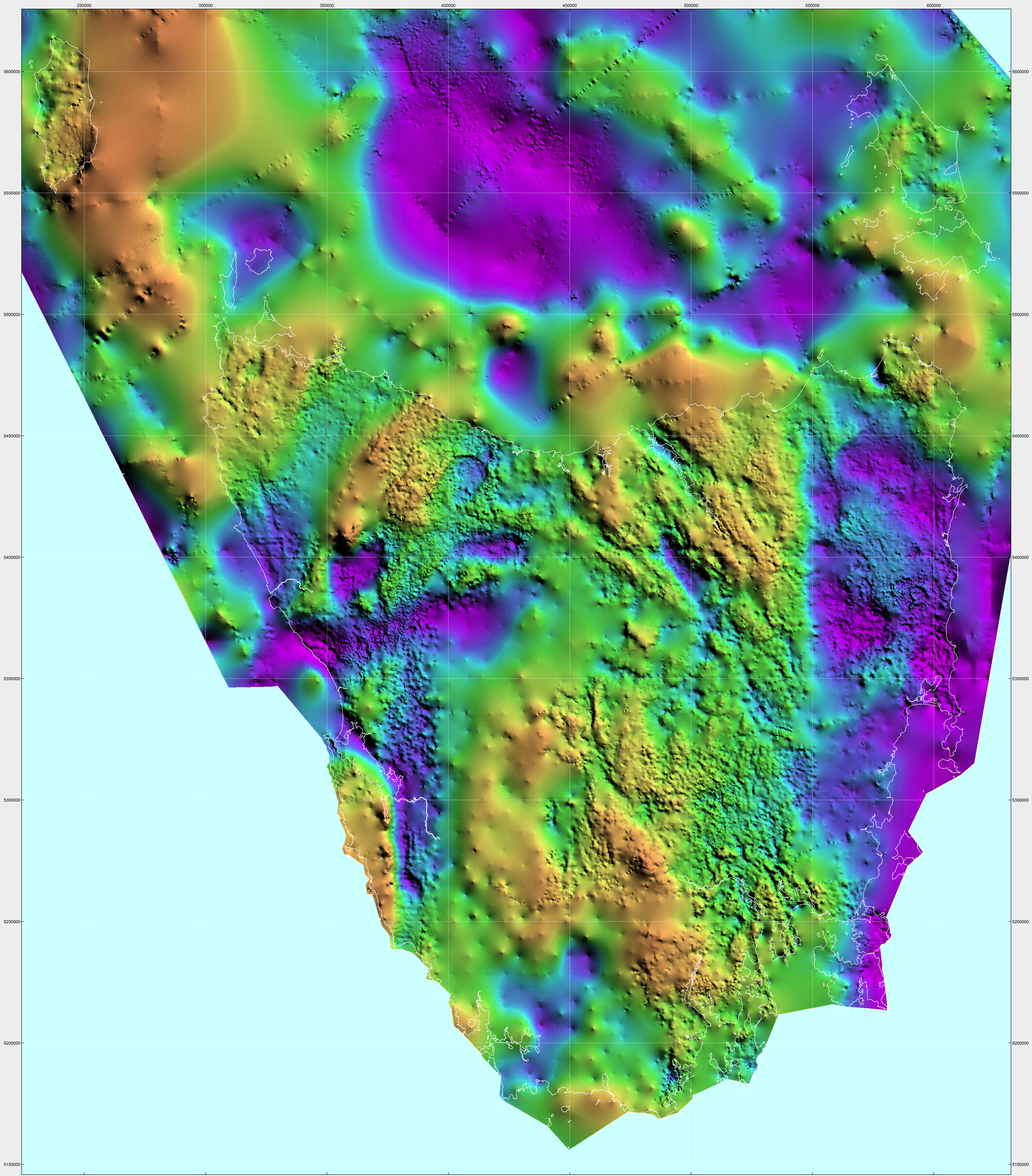




TASMANIA - RESIDUAL GRAVITY ANOMALY

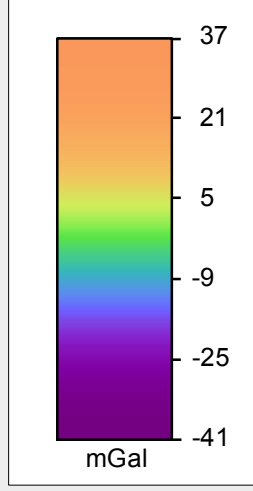
BOUGUER ANOMALY - MANTLE09



Data Specifications

Statewide Bouguer gravity anomaly, gridded using a minimum curvature technique at 125 metre cell size from > 85,000 observation points compiled from numerous government, academic and commercial surveys onshore since the 1960s, together with almost 400,000 offshore points sourced from Geoscience Australia. Onshore stations have been terrain corrected to a radius of 22 km using predominantly manual methods. The image is a residual following subtraction of Moho effects (MANTLE09 regional model by D.E. Leaman and R.G. Richardson).

The data from onshore surveys are available online from Mineral Resources Tasmania or Geoscience Australia.



Department of State Growth
MINERAL RESOURCES TASMANIA

Scale 1:500 000

0 10 20 30 40 50 KM

GDA2011 - MGA Zone 55

Production Information

Image production: M.L. Duffett.
Pixel colours were applied from a modified version of the perceptually balanced rainbow palette *cube1* developed by Matteo Niccoli, using histogram equalisation. Gradient enhancement was achieved using the ER Mapper sunangle glyph to simulate illumination from the northeast.

Map produced by the Spatial Information Services Section of Mineral Resources Tasmania.

Refer to this map as:

Duffett, M.L. February 2016.
Tasmania - Residual Gravity Anomaly.
Scale 1:500 000. Mineral Resources Tasmania.

While every care has been taken in the preparation of this data, no warranty is given as to the correctness of the information and no liability is accepted for any statement or opinion or for any error or omission. No reader should act or fail to act on the basis of any material contained herein. Readers should consult professional advisers. As a result the Crown in Right of the State of Tasmania and its employees, contractors and agents expressly disclaim all and any liability (including all liability from or attributable to any negligent or wrongful act or omission) to any persons whatsoever in respect of anything done or omitted to be done by any such person in reliance whether in whole or in part upon any of the material in this data.

Crown copyright reserved.