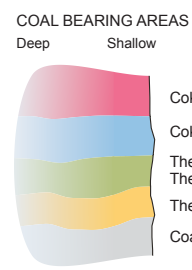
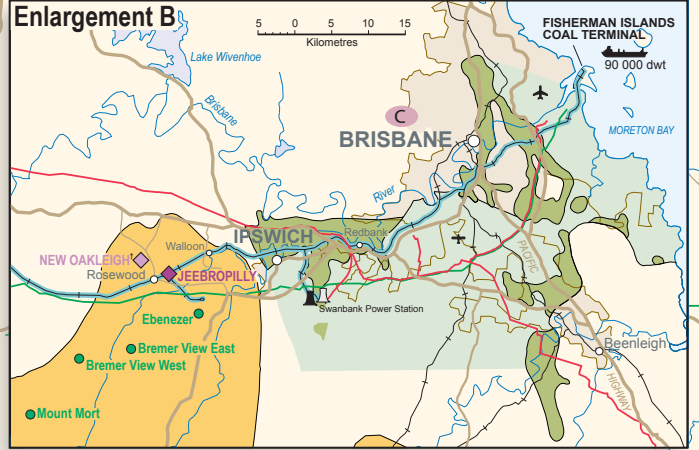
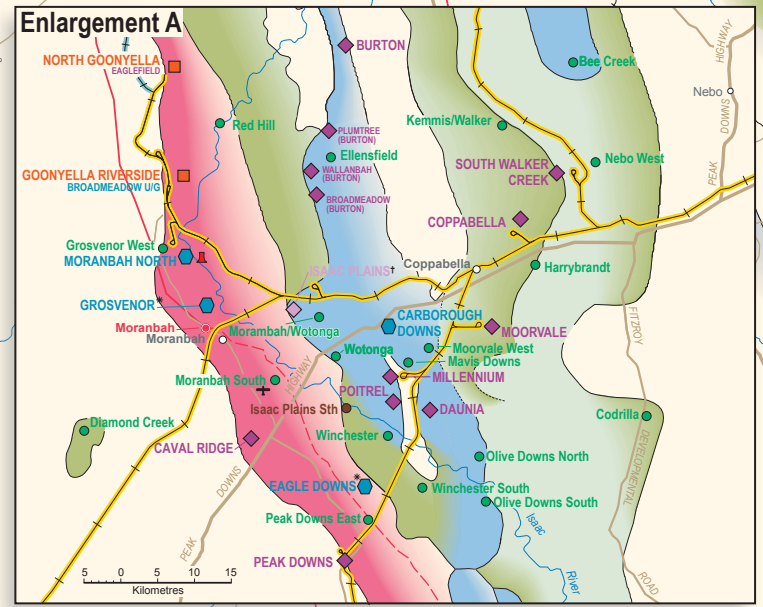
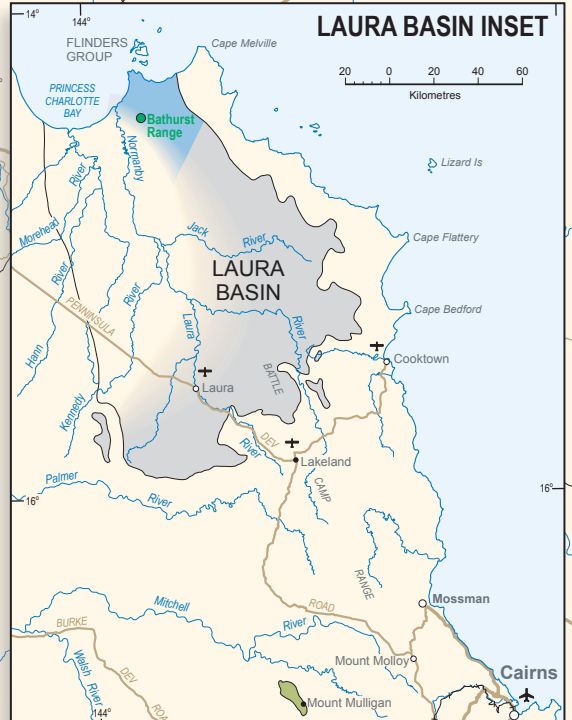
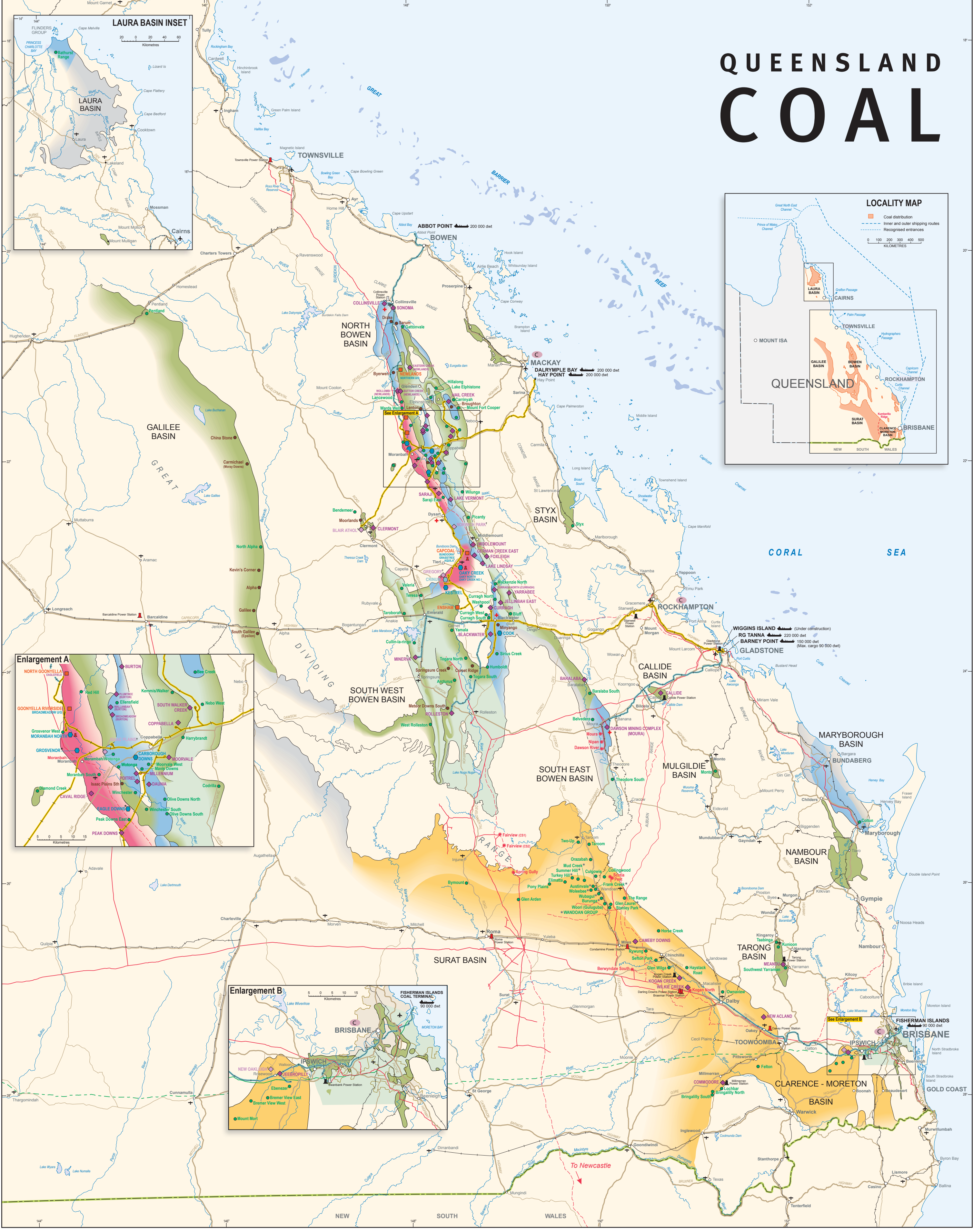


QUEENSLAND COAL



- Open-cut and underground coal mine
- Open-cut coal mine
- Underground coal mine
- New coal mine under construction
- Mine closed/ceased production
- Part of WANDOAN GROUP of coal deposits
- Identified coal deposit (undeveloped or not being mined)
- Advancing coal project
- Power station: coal-fired; gas-fired
- Power station decommissioned/care and maintenance
- Coal seam gas compressor station
- Coal mine inspector office
- Mines rescue station
- Coal export terminal
- Nominal maximum vessel size
- Gas pipeline network
- Proposed gas pipeline
- Oil pipeline (non operational)
- Airport; landing ground
- Built-up area
- Population centre; locality
- State boundary
- Railway, coal haulage route (electrified)
- Railway, coal haulage route (non-electrified)
- Railway
- Proposed Railway
- Major road
- Secondary road
- Minor road

Published by the Department of Natural Resources and Mines, Queensland
This product incorporates topographic data which is:
© Commonwealth of Australia (Geoscience Australia) 1998
All rights reserved.
© The State of Queensland (Department of Natural Resources and Mines) 2017
Cartography by Graphic Services Unit, Geological Survey of Queensland
GSQ Sales, telephone: +61 7 3006 4666, email: sales@dnrm.qld.gov.au, www.dnrm.qld.gov.au

<http://creativecommons.org/licenses/by/3.0/au/legalcode>

THIRTEENTH EDITION JANUARY 2017

